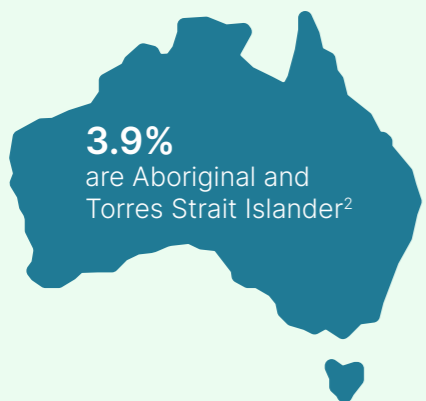




Australian Government

Status of Women Report Card

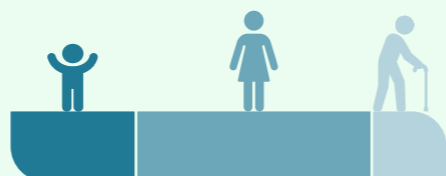
Australia is ranked 43rd for gender equality internationally¹



28.3% were born overseas

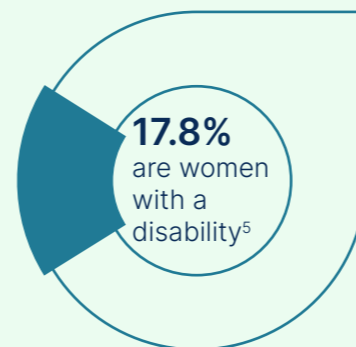


48.5% have a parent born overseas³

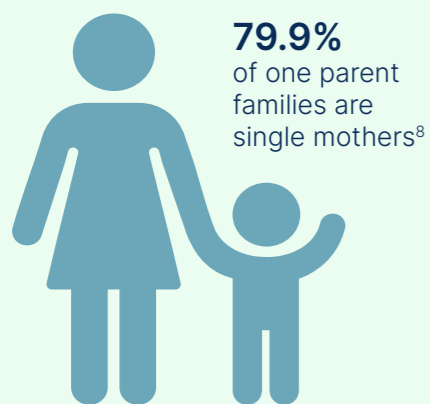
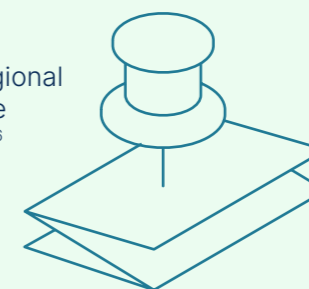


29.4% are under the age of 25

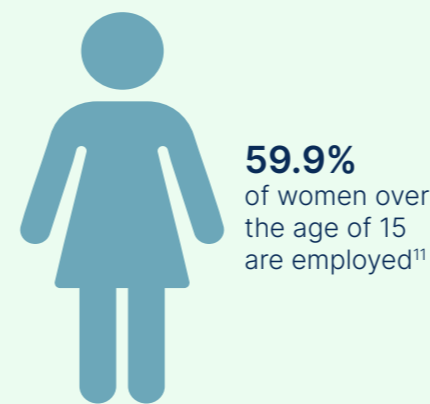
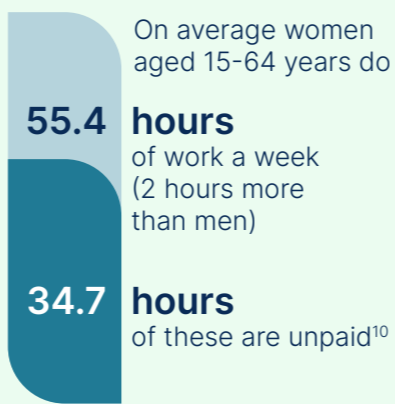
18.0% are 65 and over⁴



28.4% live in regional or remote Australia⁶



Australia has the **4th highest** level of tertiary educated women in the OECD⁹

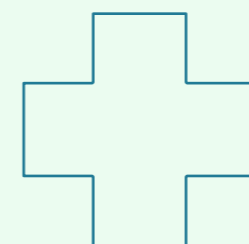
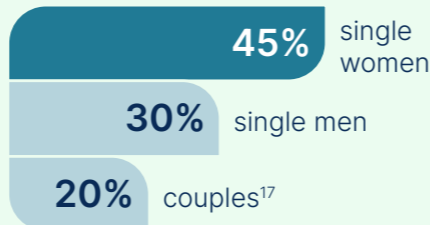


Approximately **1 in 9 women** suffer from endometriosis¹⁵



It takes an average of **5 years** to receive a diagnosis after first seeing a doctor¹⁶

Single women are the majority of rent assistance recipients

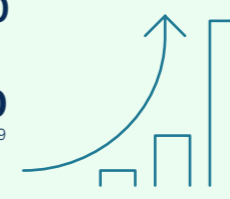


In the last 10 years, there has been a **three-fold increase** in intentional self-harm hospitalisations for young girls¹⁸

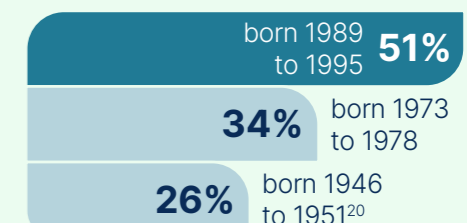
A gender pay gap emerges immediately after graduation, full-time starting salaries average

\$69,000 for men

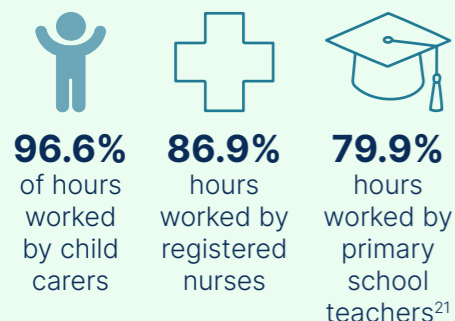
\$67,000 for women¹⁹



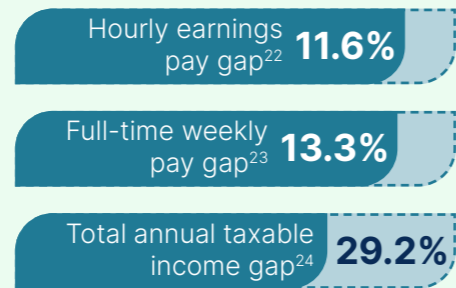
Young women are more likely to report experiencing sexual violence in their lifetime



There is gender segregation in how we work. Women work:



The full-time gender pay gap is a record low, but women still earn less on average



55% drop in earnings for the mother in the 5 years following childbirth, while men's remains unchanged²⁵



Women of all ages spend



Women do more unpaid housework than men even when they are the primary breadwinner

5 hour gap



Women approaching retirement have **23.1% less superannuation** than men of the same age²⁸



-
- 1 World Economic Forum (2022). *Global Gender Gap Report 2022*, released 13 July 2022. <https://www.weforum.org/reports/global-gender-gap-report-2022/>
- 2 ABS (2022). *Estimates of Aboriginal and Torres Strait Islander Australians, 2021*. <https://www.abs.gov.au/statistics/people/people-and-communities/cultural-diversity-census/2021>. Additional information accessed through TableBuilder.
- 3 ABS (2022). *Cultural diversity: Census, 2021*. <https://www.abs.gov.au/statistics/people/people-and-communities/cultural-diversity-census/2021>. Additional information accessed through TableBuilder.
- 4 ABS (2022). *National, state and territory population, 2022*. <https://www.abs.gov.au/statistics/people/population/national-state-and-territory-population>
- 5 ABS (2019). *Disability, ageing and carers, Australia: Summary of Findings, 2018*. <https://www.abs.gov.au/statistics/health/disability/disability-ageing-and-carers-australia-summary-findings>
- 6 ABS (2021). *Census of Population and Housing, 2016*. Office for Women calculations, accessed through TableBuilder.
- 7 ABS (2021). *General Social Survey: Summary Results, Australia, 2020*, Table 5. <https://www.abs.gov.au/statistics/people/people-and-communities/general-social-survey-summary-results-australia>
- 8 ABS, Labour Force Status of Families, Released 18 October 2022.
- 9 OECD (2023), Adult education level (indicator). doi: 10.1787/36bce3fe-en (Accessed on 24 February 2023) <https://data.oecd.org/eduatt/adult-education-level.htm#indicator-chart>
- 10 ABS (2022). *How Australians Use Their Time, 2020-21*, Table 6. Office for Women calculations. <https://www.abs.gov.au/statistics/people/people-and-communities/how-australians-use-their-time>
- 11 ABS (2023). *Labour Force, Australia, January 2023*. <https://www.abs.gov.au/statistics/labour/employment-and-unemployment/labour-force-australia/latest-release>
- 12 Politoff, et al. (2019). *Young Australians' attitudes to violence against women and gender equality: Findings from the 2017 National Community Attitudes towards Violence against Women Survey (NCAS)*. ANROWS Insights, Issue 01/2019. Sydney: ANROWS. <https://www.anrows.org.au/NCAS/2017/youth-report-findings/>
- 13 ABS (2021). *Sexual harassment, 2016*. <https://www.abs.gov.au/articles/sexual-harassment>
- 14 ABS (2021). *Sexual violence – victimisation, 2016*. <https://www.abs.gov.au/articles/sexual-violence-victimisation>
- 15 AIHW (2019). *Endometriosis in Australia: prevalence and hospitalisations, August 2019*. <https://www.aihw.gov.au/getmedia/a4ba101d-cd6d-4567-a44f-f825047187b8/aihw-phe-247.pdf.aspx?inline=true>
- 16 Armour, et al. (2020). Endometriosis and chronic pelvic pain have similar impact on women, but time to diagnosis is decreasing: an Australian survey. *Science Reports*, 10(16253). <https://doi.org/10.1038/s41598-020-73389-2>
- 17 Commonwealth Rent Assistance 2018 data commissioned from Department of Social Services for the Equality Rights Alliance (2020). *Equality Rights Alliance National Plan on Gender Equality 2020*. <http://www.equalityrightsalliance.org.au/wp-content/uploads/2020/05/PRINT-Affordable-and-Appropriate-Housing-for-Women-final-2020.pdf>
- 18 AIHW (2021). *Suicide & self-harm monitoring: Intentional self-harm hospitalisations among young people 2020-21*. <https://www.aihw.gov.au/suicide-self-harm-monitoring/data/suicide-self-harm-monitoring-data>
- 19 Quality Indicators for Learning and Teaching. *Graduate Outcomes Survey 2022*. [https://www.qilt.edu.au/surveys/graduate-outcomes-survey-\(gos\)](https://www.qilt.edu.au/surveys/graduate-outcomes-survey-(gos))
- 20 Townsend, N., Loxton, D., Egan, N., Barnes, I., Byrnes, E., & Forder, P. (2022). *A life course approach to determining the prevalence and impact of sexual violence in Australia: Findings from the Australian Longitudinal Study on Women's Health* (Research report 14/2022). ANROWS. <https://www.anrows.org.au/publication/a-life-course-approach-to-determining-the-prevalence-and-impact-of-sexual-violence-in-australia-findings-from-the-australian-longitudinal-study-on-womens-health/>
- 21 Borland (2022). Australian women are largely doing the same jobs they've always had, latest data shows. *The Conversation*. <https://theconversation.com/australian-women-are-largely-doing-the-same-jobs-theyve-always-had-latest-data-shows-195014>
- 22 ABS (2022). *Gender Indicators, Gender pay gap measures, May 2021*. <https://www.abs.gov.au/statistics/people/people-and-communities/gender-indicators>
- 23 ABS (2022). *Gender Indicators, Gender pay gap measures, November 2022*. <https://www.abs.gov.au/statistics/people/people-and-communities/gender-indicators>
- 24 ATO (2022). *Taxation statistics 2019-20: Individuals statistics*. <https://www.ato.gov.au/About-ATO/Research-and-statistics/In-detail/Taxation-statistics/Taxation-statistics-2019-20/>
- 25 E Bahar, N Bradshaw, N Deutscher, M Montaigne (2022). *Children and the gender earnings gap, Treasury Round Up October 2022*. <https://treasury.gov.au/sites/default/files/2022-11/p2022-325290-children.pdf>
- 26 ABS (2021). *How Australians Use Their Time, Table 1 Time Spent, 2020-21*. <https://www.abs.gov.au/statistics/people/people-and-communities/how-australians-use-their-time>
- 27 Melbourne Institute, Applied Economic & Social Research (2019) *HILDA Statistical Report Waves 1 to 17*, p.98. <https://melbourneinstitute.unimelb.edu.au/hilda/publications/hilda-statistical-reports/past-reports>
- 28 ATO (2020) *Taxation statistics 2019-20, Snapshot Table 5, Chart 12, Median super balance by age and sex*. <https://www.ato.gov.au/About-ATO/Research-and-statistics/In-detail/Taxation-statistics/Taxation-statistics-2019-20/>